



# Onscreen Marking System

December 2023

The Hong Kong Examinations and Assessment Authority (HKEAA) is committed to providing valid, reliable and equitable examinations and assessment services for candidates. Each year, the HKEAA appoints thousands of markers, most of whom are school teachers. They are responsible for marking answer scripts from tens of thousands of candidates.

Onscreen Marking (OSM) has been adopted since 2007 to enhance the quality and efficiency of marking. All Category A subjects of the Hong Kong Diploma of Secondary Education Examination (HKDSE) are marked onscreen. OSM is also used in other examinations and assessments, such as the Territory-wide System Assessment (TSA).

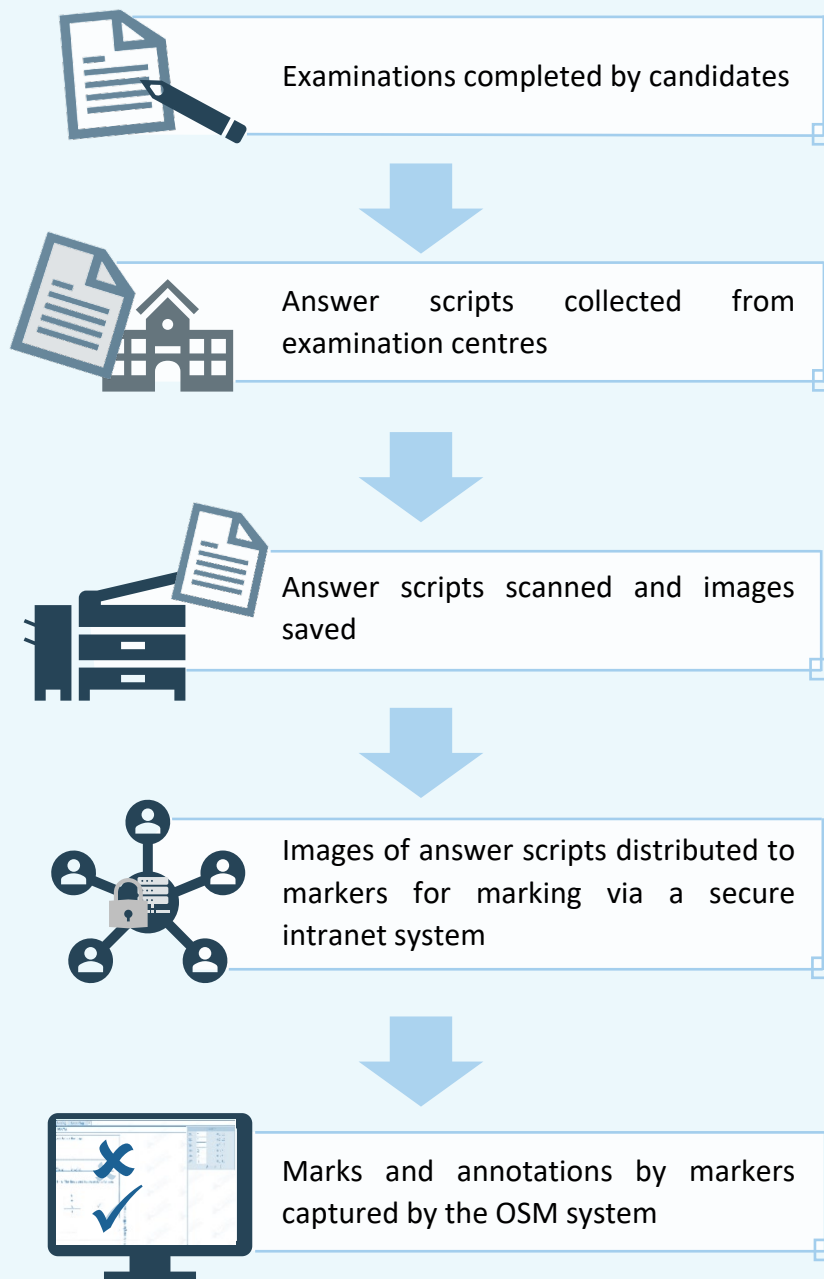
## Onscreen Marking

After the examinations, the HKEAA collects the answer scripts from the examination centres. Then the scripts will be scanned, with their images saved and retained in a secure computer database. The images of the answer scripts will be distributed to markers via a secure intranet system.

Markers have to mark the scripts at the assessment centres of the HKEAA. Various assessment centres are located in different districts easily accessible to markers.

In addition, the HKEAA has piloted an Internet OSM (i-OSM) system since 2022. Some markers can login to the OSM system via an authenticated internet connection to mark the scripts at home or at school.

**Below is the OSM workflow:**



## Benefits of Onscreen Marking

- Security**
- Storage of scanned images of scripts in a secure computer database
  - Elimination of the need to return scripts to HKEAA premises as marking is done at assessment centres

- Marking Quality**
- Real-time monitoring of marking progress and marking consistency of markers
  - Marking irregularities identified and remedied as soon as possible
  - Flexible allocation of individual questions to specialist markers
  - Robust checkmarking functions, random distribution of quality-control scripts and marking statistics available for controlling marking quality

- Efficiency**
- More efficient and flexible script management processes
  - Higher efficiency in mark calculation
  - Immediate distribution of scripts to two markers for double marking

- Accuracy**
- Reduction of errors arising from mark entries
  - Reduction of errors associated with manual mark calculation and recording processes

- Data Availability**
- More detailed analysis of candidates' performance
  - More information on responses to individual questions for better analysis and feedback regarding candidates' performance
  - Easy retrieval of scripts to enhance the efficiency of the appeal process and research

## Assessment Centres

Assessment centres have been set up in various districts of Hong Kong, including some on-campus assessment centres, to facilitate markers to take part in OSM. These centres are also used for the delivery of computer-based examinations and for the administration and marking of other tests, as well as for the training of examiners, markers, teachers and other examination personnel.

### More about OSM

[www.hkeaa.edu.hk/en/exam\\_personnel/osm/](http://www.hkeaa.edu.hk/en/exam_personnel/osm/)

### Enquiries Hong Kong Examinations and Assessment Authority Public Examinations Information Centre

Address: 12/F Southorn Centre, 130 Hennessy Road, Wan Chai, Hong Kong  
Telephone: 3628 8860  
Fax: 3628 8928  
Email: [dse@hkeaa.edu.hk](mailto:dse@hkeaa.edu.hk)  
Website: [www.hkeaa.edu.hk](http://www.hkeaa.edu.hk)