



香港考試及評核局
Hong Kong
Examinations and
Assessment Authority

Briefing Session for HKDSE Category C Subjects

September 2021



Rundown

- Part 1: The exam: structure & constructs
- Part 2: 2021 results & candidates' performances
- Part 3: 2022 exam & teacher support



Part 1: The exam: structure & constructs



Exam Structure

(French, German, Japanese & Spanish)

Component	Weighting	Time
1. Speaking	29%	20 mins.
2. Reading & Writing	50%	1 hr. 45 mins.
3. Essay	21%	1 hr. 30 mins.



Exam Structure

(Hindi & Urdu)

Component	Weighting	Time
2. Reading & Writing	70%	1 hr. 45 mins.
3. Essay	30%	1 hr. 30 mins.



Exam Structure

(French, German, Japanese & Spanish)

Component	Weighting	Time
1. Speaking	29%	20 mins.
2. Reading & Writing	50%	1 hr. 45 mins.
3. Essay	21%	1 hr. 30 mins.



Structure of Component 1

Section	Mark Allocation	Time
1. Presentation	20	3 mins 30 seconds
2. Topic conversation	40	7-8 minutes
3. General conversation	40	8-9 minutes



Component 1: Timing logistics

- Examiners will use a visible timer
- It will be set at 20 minutes
- A 1-minute sign will be held up after 2 mins. 30 secs. of presentation
- Section 1 will finish approx. 16 mins. 30 left
- Section 2 will start at approx. 16 mins left
- Section 3 will start at approx. 9 mins left



Component 1: Speaking

- Test constructs
 - What is being tested?



Section 1: Presentation (20 marks)

- Three domains:
 - Content and presentation (10 maximum)
 - Pronunciation and intonation (5 maximum)
 - Language (5 maximum)



Section 1: Presentation (20 marks)

- Content and presentation (10 maximum)
 - Coverage of topic
 - Organization and coherence
 - Opinions and facts
 - Delivery
 - Interest
- *N.B. If no specific reference to society or cultural heritage of country where language spoken-half marks for this domain, i.e. max. is 5.*



Section 1: Presentation (20 marks)

- Pronunciation & intonation (5 maximum)
 - Accurate pronunciation and intonation
 - Mother tongue influence / comprehensibility
 - *N.B. Not necessarily native speaker for full marks. May have some hesitation and errors for full marks.*



Section 1: Presentation (20 marks)

- Language (5 maximum)
 - Feel for language
 - Fluency
 - Accuracy
 - Use of relevant idiomatic language
 - Range of structures
 - Range of vocab
 - Clarity of meaning



Section 2: Topic conversation (40 marks)

- 5 domains
 - Comprehension & responsiveness (10 max)
 - Accuracy (10 max)
 - Feel for language (10 max)
 - Range of vocab & structures
(Providing info & opinion) (5 max)
 - Range of vocab & structures
(Seeking info & opinion) (5 max)



Section 2: Topic conversation (40 marks)

- Comprehension & responsiveness (10 max)
 - Extent candidate understands examiner
 - Naturalness in responses
 - Spontaneity and initiative
 - Ability to defend point of view



Section 2: Topic conversation (40 marks)

- Accuracy (10 max)
 - Frequency of errors
 - Understanding of grammatical usage



Section 2: Topic conversation (40 marks)

- Feel for language (10 max)
 - Naturalness
 - Fluency of expression
 - Appropriate idiom
 - Influence of or translation from mother tongue



Section 2: Topic conversation (40 marks)

- Range of vocab & structures
(Providing info & opinion) (5 max)
 - Variety
 - Confidence in use vs. limiting expression



Section 2: Topic conversation (40 marks)

- Range of vocab & structures (Seeking info & opinion) (5 max)
 - Ability and number of questions asked
 - Spontaneity
 - Initiative
 - Accuracy and variety of question forms
 - Comprehensibility



Section 3: General Conversation (40 marks)

- 5 domains
 - Comprehension & responsiveness (10 max)
 - Accuracy (10 max)
 - Feel for language (10 max)
 - Range of vocab & structures
(Providing info & opinion) (5 max)
 - Range of vocab & structures
(Seeking info & opinion) (5 max)



Section 3: General Conversation (40 marks)

- Same as Section 2



Exam Structure

Component	Weighting	Time
1. Speaking	29%	20 mins.
2. Reading & Writing	50%	1 hr. 45 mins.
3. Essay	21%	1 hr. 30 mins.



Structure of Component 2

Passage	Question	Question type example	Mark allocation
Passage 1	1	Vocabulary: seeking synonym in text	5
	2	Grammatical manipulation	5
	3	Comprehension questions	20 (15+5)
Passage 2	4	Comprehension questions	20 (15+5)
Passage 1 & 2	5	(a) Summary of details from both texts (b) Personal response	20 (10 +5+5)



Component 2: Reading & Writing

- **Question 1** : Seeking a phrase: Do not omit words or include extra words.
- **Question 2**: Rewriting phrases: Answers should fit back into the original text, retaining the same meaning.
- **Questions 3 and 4**: Comprehension of texts. Answer in own words. Direct copying of four or more words from text will invalidate answer.
- **Question 5(a)**: Summary: Introduction, conclusions & vague generalisations not required. Specific, relevant details attract marks.
- **Question 5(b)**: Personal response: Give a point of view and, if possible, offer ideas which have not appeared in texts.
- Total of 140 words / 280 Japanese characters for both parts in Q5.



Exam Structure

Component	Weighting	Time
1. Speaking	29%	20 mins.
2. Reading & Writing	50%	1 hr. 45 mins.
3. Essay	21%	1 hr. 30 mins.



Component 3: Essay

Word guide	Mark Allocation
250–400 words (600–800 characters in Japanese)	40 marks total: <ul style="list-style-type: none">• 24 marks: Quality of Language• 16 marks: Content



Component 3: Set topics

- 1 Patterns of Daily Life
- 2 Food and Drink
- 3 Employment & Unemployment
- 4 Social & Economic Development
- 5 Environment



HKEAA website

http://www.hkeaa.edu.hk/en/HKDSE/assessment/subject_information/category_c_subjects/



Category C: Other Language Subjects

Home > HKDSE > Assessment Information > Subject Information

- ▶ Introduction
- ▶ Assessment Information
- ▶ Examination Administration
- ▶ Important Dates
- ▶ FAQs on HKDSE
- ▶ Information Related to HKDSE
- ▶ The 10th Anniversary of the HKDSE
- ▶ Contact Us

Six language subjects are offered to candidates in the HKDSE. They are:

- French Language
- German Language
- Hindi Language
- Japanese Language
- Spanish Language
- Urdu Language

Question papers of the Advanced Subsidiary (AS) level from [Cambridge Assessment International Education](#) (Cambridge International)* are used for the examinations of these six subjects. Marking and grading are conducted by Cambridge International. Results are reported in five grades (a-e) on the HKDSE certificate, with grade "e" being the lowest and grade "a" being the highest. Achievement below grade "e" is designated as "Ungraded" and is not reported on the certificate.

Syllabuses for HKEAA Centre

[2020-2022](#)

Instructions to Candidates

[2020 Examination Year - November 2019 Series](#)

- ▶ [Other Resources](#)
- ▶ [Frequently Asked Questions](#)



Quick Links

- ▶ [Review of Senior Secondary Curriculum and Assessment](#)
- ▶ [HKDSE Handbook for Candidates](#)
- ▶ [Bad Weather during HKDSE](#)
- ▶ [Certificate of Examination Results](#)



Part 2: 2021 results & candidates' performances



2021 Number of candidates

Subject	No of Cands.
French	37
German	1
Hindi	10
Japanese	345
Spanish	19
Urdu	30
<i>TOTAL</i>	<i>442</i>

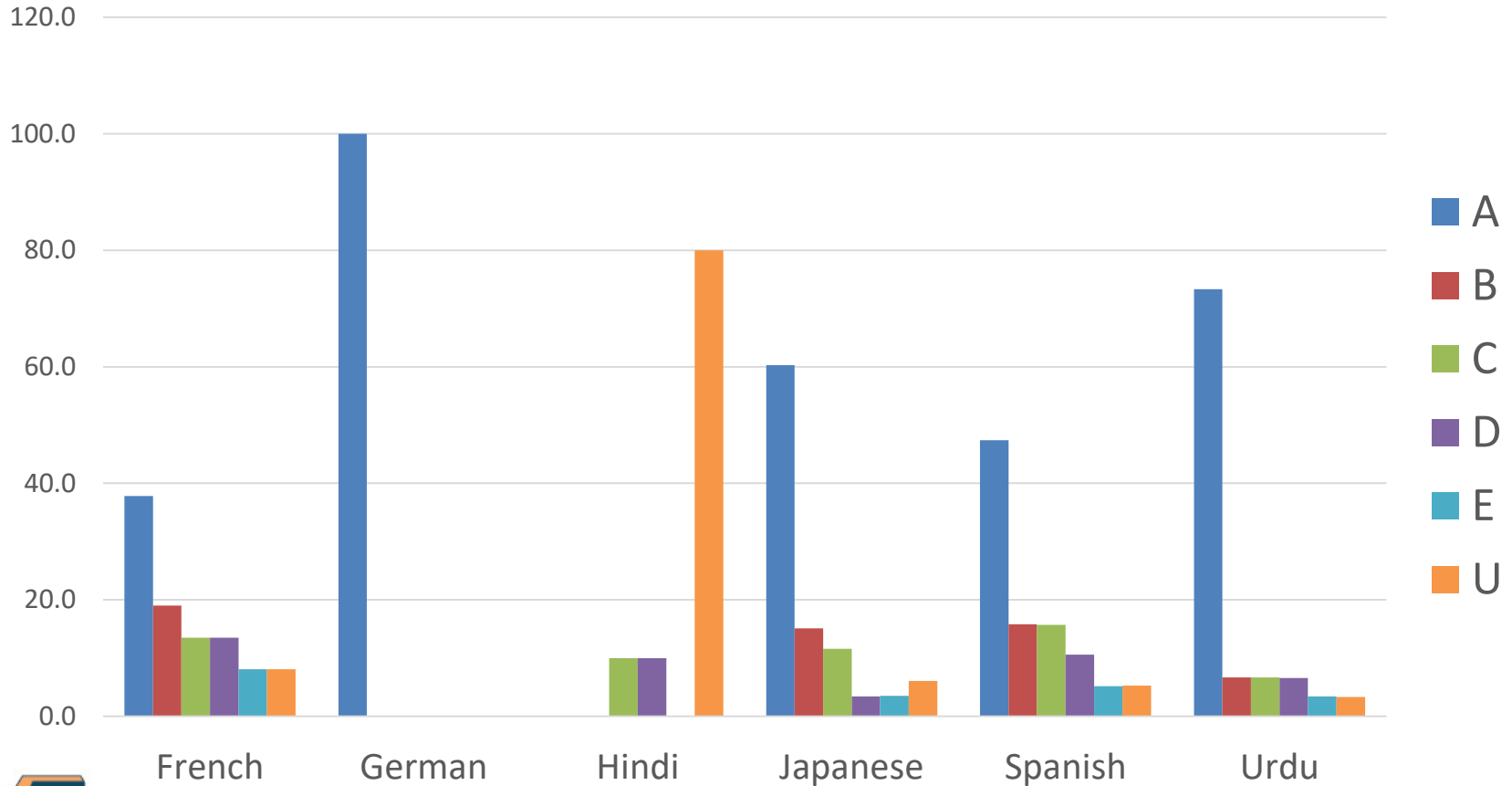


Results 2021 examination (in percentages)

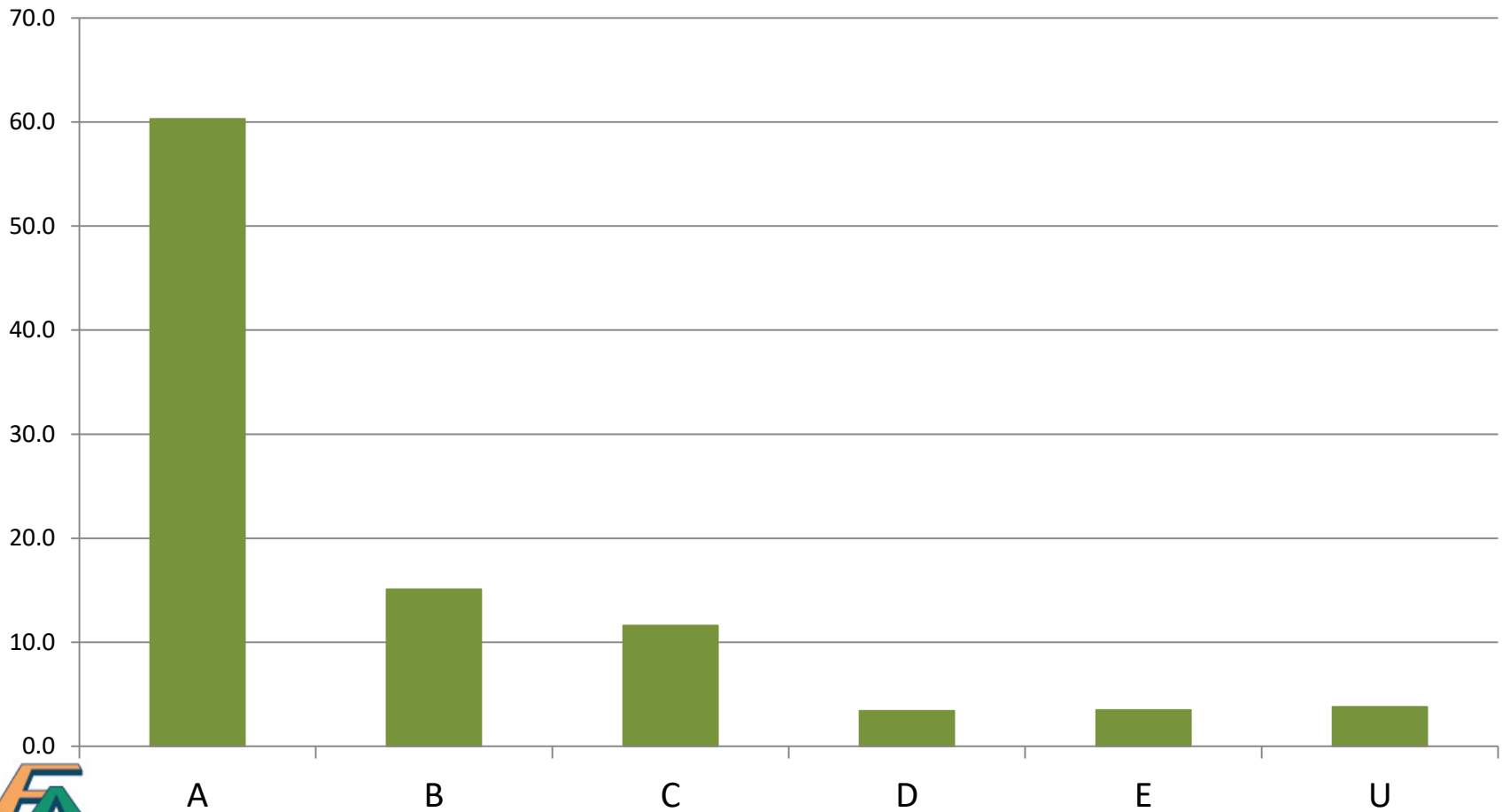
	A	B	C	D	E	U	Total
French	37.8	19.0	13.5	13.5	8.1	8.1	100
German	100.0	0.0	0.0	0.0	0.0	0.0	100
Hindi	0.0	0.0	10.0	10.0	0.0	80.0	100
Japanese	60.3	15.1	11.6	3.4	3.5	6.1	100
Spanish	47.4	15.8	15.7	10.6	5.2	5.3	100
Urdu	73.3	6.7	6.7	6.6	3.4	3.3	100



Results 2021 examination

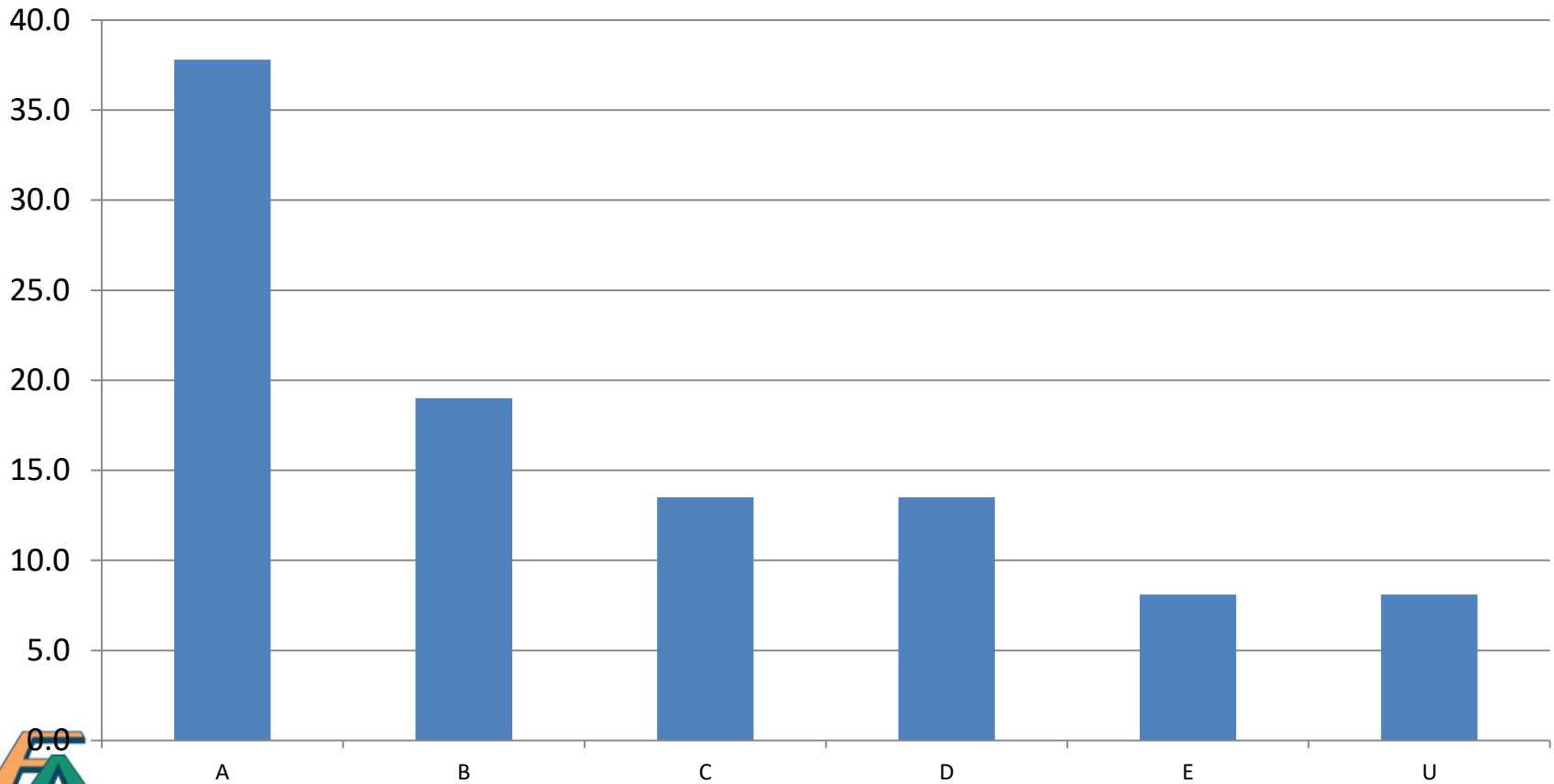


Results 2021: Japanese



Results 2021: French

French



2021 Candidates' Performance from Principal Examiner reports

Component	Weighting	Time
1. Speaking	29%	20 mins.
2. Reading & Writing	50%	1 hr. 45 mins.
3. Essay	21%	1 hr. 30 mins.



2021 Performance: French

Key messages

- Make sure that presentation not just factual, but contains ideas and opinions
- Ask questions of Examiner in both conversation sections and ask more than one question in order to qualify for full range of marks.
- Make sure your questions are relevant to topic under discussion.
- Topic Presentation must make clear reference to a francophone culture or society:
 - The presentation must demonstrate candidate's knowledge of contemporary society or cultural heritage of a country where the target language is spoken. This must be more than a passing reference.



2021 Performance: French

Key messages (cont).

- Do not to ask Examiner direct questions during the Topic Presentation, as they disrupt flow of the Presentation and do not count towards *Seeking Information* in conversation sections.
- Rhetorical questions in the Topic Presentation do not count towards *Seeking Information* in conversation sections.



2021 Performance: German

- Presentation should refer clearly to culture or society of a German-speaking country and should also include some personal input.
- Presentations that are far too long will not receive high marks, as they cannot be considered to have been ‘well organised’.
- Candidates should ask the examiner at least two questions in topic conversation and two questions in general
- No marks will be awarded for Seeking Information if candidate asks no questions.
- Questions should be integrated into discussions and not left to end.
- The questions candidate puts to examiner should be varied. ‘Was denken Sie?’ or ‘Was ist Ihre Meinung?’ are useful questions, but a wider range is expected for a mark of five, or even four.



2021 Performance: Japanese

- Candidates should prepare presentation on a topic related to Japan or Japanese culture which is of interest to them.
- Candidates should try to learn interesting and advanced vocabulary on chosen topic but be careful not to make it too difficult for themselves.
- Candidates should actively seek to engage the Examiner in conversation.
- Candidates should be encouraged to not only prepare their presentation, but also anticipate some of directions topic conversation might take, and think about what they might contribute to conversation.
- Candidates should continue to work on pronunciation and intonation.
- Candidates should address Examiner as 'sensei' rather than 'anata'.



2021 Performance: Spanish

- Candidates' own interests should play a part in choice of subject for presentation.
- Clear reference should be made to Hispanic culture or society.
- Structure presentation to fit into allowed time, and to express not only facts, but ideas and opinions.
- Presentations ideally provided a personal overview of issue to lead to the basis of a debate in topic conversation.
- Focus on questions asked and be sure to answer what is asked.
- To gain access to higher levels of the mark scheme, candidates needed to show competence in dealing with hypothetical and abstract situations as well as factual or descriptive areas.



Exam Components

Component	Weighting	Time
1. Speaking	29%	20 mins.
2. Reading & Writing	50%	1 hr. 45 mins.
3. Essay	21%	1 hr. 30 mins.



Component 2: Reading & Writing

- Key messages

- **Question 1:** word or words chosen as answer must be interchangeable in every respect with the word or words given in question. Additional or missing words invalidate answer.
- **Question 2:** start sentence with the prompt provided and be careful with the consequent grammatical changes in new sentence. Do not alter vocabulary or meaning unnecessarily.
- **Questions 3 and 4:** candidates should not simply 'lift' items unaltered from text. They need to manipulate or re-phrase the text in some way.
- In **Question 5**, candidates should respect the word limit. Any material in excess of published word count is ignored. Candidates should not write a general introduction.
- **Question 5(b):** candidates should express their own ideas (instead of merely copying ideas from the text).



Component 3: Essay – Key Message

- Select title with which they feel most comfortable.
- Write a response that is clearly relevant, well illustrated, coherently structured and well informed.
- Use target language which is accurate and of a suitably advanced nature, as well as demonstrate a good use of idiom and topic-related vocabulary.
- Use sentence patterns which show some evidence of complexity in style which is easy to follow.
- Leave some time at end of to check for avoidable language errors.
- Stay within the prescribed word limits (250-400 words / 600 – 800 Japanese characters).
- Do not to use transliterations of English words instead of the appropriate vocabulary items in Hindi / Urdu.



Part 3: 2022 exam & teacher support



2022 Examination

	No of candidates
French	40
German	8
Hindi	13
Japanese	402
Spanish	18
Urdu	42

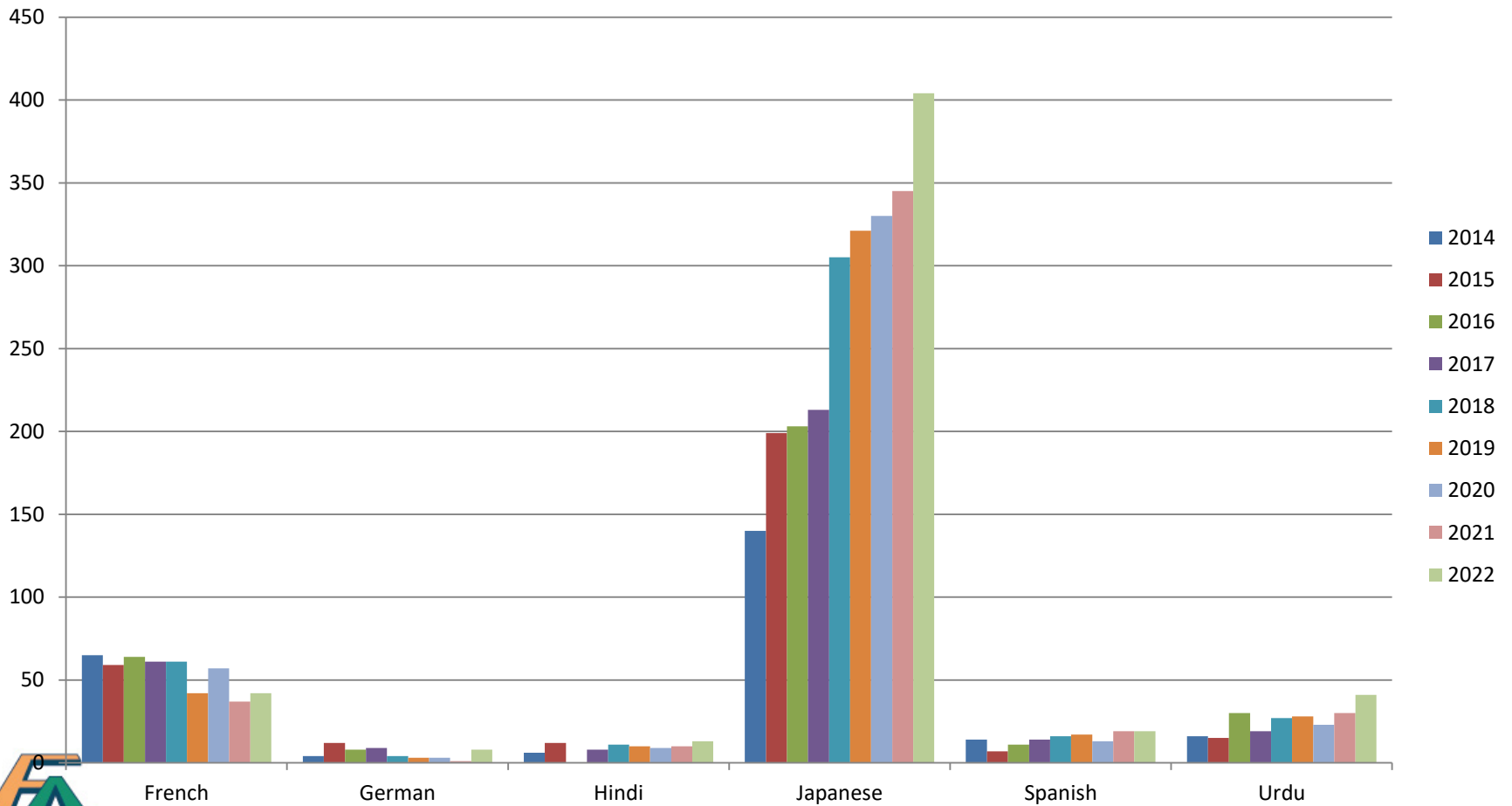


2012-22 Candidate Numbers

	2012	2013	2014	2015	2016	2017	2018	2019	2020	2021	2022
French	88	89	65	59	64	61	61	42	57	37	40
German	3	1	4	12	8	9	4	3	3	1	8
Hindi	10	8	6	12	0	8	11	10	9	10	13
Japanese	135	114	140	199	203	213	305	321	330	345	402
Spanish	9	20	14	7	11	14	16	17	13	19	18
Urdu	5	13	16	15	30	19	27	28	23	30	42
TOTAL	250	245	245	304	316	324	424	421	435	442	523



2012-22 Candidate Numbers



2022 Exam (Nov. 2021 series)

- Dates:
 - Component 1 (Nov. series)
 - 1 October – 24 October 2021
 - Component 2 and 3
 - 1 October – 27 October 2021



Precautionary Measures at Examination Centres

https://www.hkeaa.edu.hk/en/HKDSE/info_corner/2021HKDSE_Contingency_Precautionary_Measures/index.html



Teaching support

- **Education Bureau**
- Curriculum Development:
 - Tel: 2892 6403



Oral examiner recruitment

- Berenice Kwok:
 - bkwok@hkeaa.edu.hk

for application form.



Examination support

Hong Kong Examinations and Assessment Authority

- Exam logistics:
- Christine Lee: yhlee@hkeaa.edu.hk
- Speaking exam administration:
- Cameron Smart: cjsmart@hkeaa.edu.hk

