

# BRIEFING SESSION ON THE 2014 MUSIC EXAMINATIONS

## PAPER 1 (LISTENING)

## PAPER 3 (CREATING)

LEE, Man-ye Anna  
Manager, HKEAA

Venue: 14/F, Southorn Centre

Date: 10 November, 2014

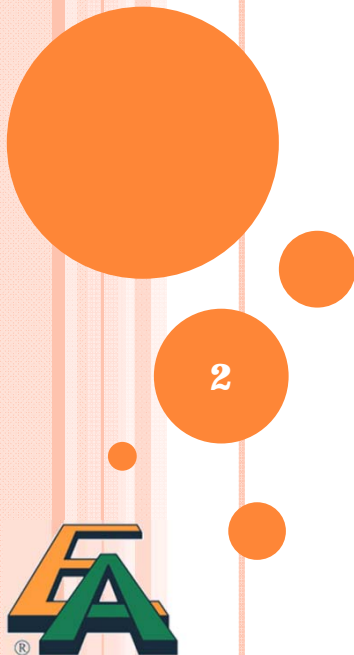


香港考試及評核局  
Hong Kong  
Examinations and  
Assessment Authority

HONOURABLE GUEST SPEAKERS:

**Dr. Joshua Chan**

**Dr. Lai Nga-ting Ada**



# AGENDA

2015 New Assessment Criteria		
Medium-term Review	15 minutes	Anna Lee
2015 Music Examinations briefing		
Review on 2014 Paper 1 (Listening)	1 hour	Dr. Ada Lai Dr. Joshua Chan
Break	15 minutes	
Review on 2014 Paper 3 (Creating I)	1 hour	Dr. Ada Lai
Q&A	30 minutes	



# REMINDERS

1	Submission of Paper 2 (Performing I) (★submit together the sight-singing melody used)	17-21 November, 2014 (next Monday – Friday)
2	Forms to be submitted for 2015 exam	By October
3	Supplementary samples for sight-singing published	<a href="http://www.hkeaa.edu.hk/en/hkds/e/assessment/subject_information/category_a_subjects/hkdse_subj.html?A2&amp;2&amp;18_5">http://www.hkeaa.edu.hk/en/hkds/e/assessment/subject_information/category_a_subjects/hkdse_subj.html?A2&amp;2&amp;18_5</a>
4	Mark penalty on change of performance instrument in Paper 4B (Performing I) (Solo)	Effective from 2014 exam and beyond
5	Change of Assessment Framework from 2015	Apply to current S5 students



# ASSESSMENT FRAMEWORK IN 2015 & BEYOND

Part	Mode	Duration	Weighting
<b>Compulsory Part</b>			
Paper 1: Listening	Public written examination Part A: Music in the Western classical tradition Part B: Chinese instrumental music, Cantonese operatic music, Local and Western popular music	Part A: about 75 mins  Part B: about 75 mins	40%
Paper 2: Performing I	External assessment (practical examination)	About 30 mins	20%
Paper 3: Creating I	External assessment (Portfolio)	N. A.	20%
<b>Elective Part</b> (choosing one paper)			
Paper 4A: Special Project	External assessment (Project report)	N. A.	20%
Paper 4B: Performing II	External assessment (Practical examination) <i>OR</i> other recognised qualifications	About 30 mins	20%
Paper 4C: Creating II	External assessment (Portfolio) <i>OR</i> other recognised qualifications	N. A.	20%

## PAPER 2: PERFORMING I (20%)

1. two or more pieces in an instrumental or vocal ensemble in contrasting styles in a recital (15%), range from 10 to 15 minutes, and
2. viva voce lasting for 3 to 5 minutes (3%);
3. sing at sight a tonal melody of 8 to 12 bars (2%).

basic requirements of this Paper are comparable to the Grade 4 practical examination of the ABRSM

Video record of all the above items for External Assessment



# Paper 3: Creating I (20%)

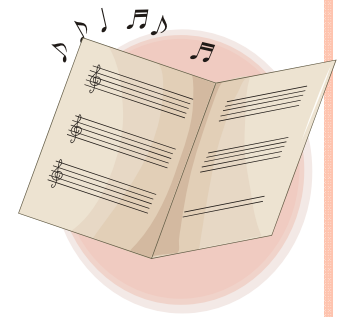
- two or more compositions (16%),
- the total duration of which should be approximately 6 to 15 minutes,
- with at least one composition scored for an ensemble;
- a reflective report (4%) of about 500 words.

Portfolio submission for External Assessment.



## PAPER 4C: CREATING II (20%)

- **two music arrangements** of specific tasks, the total duration of which should range from **8 to 18 minutes** (16%) :
  - (1) to arrange an instrumental piece for a different instrumentation, and
  - (2) to add accompaniment and extension to an existing song or melody.



Candidates should make the arrangement on an original piece, and that the score of the original piece has to be submitted together with the arrangement; and

- a reflective report (4%) of about **600 words**.

Project submission for External Assessment





# Paper 4A: Special Project (20%)

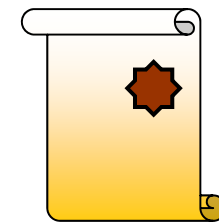
- Candidates have to submit a written report of **3,000 to 5,000 words** to discuss the musical and cultural context of a particular topic for external assessment.
- ✦ The procedure of seeking approval by the HKEAA in advance for the Special Project topic is abolished.

Project submission for External Assessment



# Paper 4B: Performing II (20%)

- sing or play three or more pieces individually in contrasting styles in a recital (18%), the duration of which should range from 10 to 20 minutes, and take part in a **viva voce lasting for 3 to 5 minutes** to explain their understanding and interpretation of the music performed (2%)
- basic requirements of this paper are comparable to the Grade 6 practical examination of the ABRSM
- Applying for Exemption or sitting a Practical examination




# SUBMISSION PERIOD FOR 2015 EXAM

	Paper	Examination	Examination / Submission Period
Compulsory part	Paper 1 (Listening)	Written examination	Please refer to the 2015 HKDSE examination timetable
	Paper 2 (Performing I)	<ul style="list-style-type: none"> <li>• Ensemble performance, Viva Voce &amp; Sight-singing</li> <li>- Submit video recording (CD) of the above three items</li> <li>- Music scores, sight-sing melody used</li> <li>- Record of ensemble performance, viva voce and sight-singing form</li> </ul>	17 – 21 Nov 2014
	Paper 3 (Creating I)	<ul style="list-style-type: none"> <li>• Portfolio:                             <ul style="list-style-type: none"> <li>- Scores of the compositions (two or more compositions in 6-15 minutes with at least one scored for an ensemble)</li> <li>- Audio recording of the compositions in <u>one</u> CD</li> <li>- Reflective report of about 500 words</li> <li>- Declaration of authenticity</li> </ul> </li> </ul>	19 – 23 Jan 2015



Elective part (choosing one paper)

	<p>Paper 4 A (Special Project)</p>	<ul style="list-style-type: none"> <li>• Special Project:               <ul style="list-style-type: none"> <li>- Written report of about 3000-5000 words</li> <li>- Declaration of authenticity</li> <li>- Additional materials (if any)</li> </ul> </li> </ul>	<p>19 – 23 Jan 2015</p>
	<p>Paper 4B (Performing II)</p>	<ul style="list-style-type: none"> <li>• Practical Exam: Solo &amp; Viva Voce</li> </ul> <p>Candidate should bring along with him/her the music scores that will be performed for the examiner. The Authority will only provide a piano for the examination.</p>	<p>Late Feb – mid Apr 2015</p>
		<p>Or apply for exemption: Candidate should submit the softcopy of the certificate at the time of entry through the HKDSE examination registration system. The certificate submitted should be verified by his/her school and the stamp of the school seal should be shown on the copy.</p>	<p>Candidate is allowed to submit the updated evidence of qualification on or before 15 Jan 2015.</p>
	<p>Paper 4C (Creating II)</p>	<ul style="list-style-type: none"> <li>• Portfolio:               <ul style="list-style-type: none"> <li>- two music arrangements of specific tasks, the total duration of which should range from 8 to 18 minutes:                   <ul style="list-style-type: none"> <li>(1) to arrange an instrumental piece for a different instrumentation, and (2) to add accompaniment and extension to an existing song or melody</li> </ul> </li> <li>- Scores of the original piece that make the arrangements</li> <li>- Audio recording of the arrangements in <b>one</b> CD</li> <li>- Reflective report of about 600 words</li> <li>- Declaration of authenticity</li> </ul> </li> </ul>	<p>19 – 23 Jan 2015</p>
	<p>Or apply for exemption: Candidate should submit the softcopy of the certificate at the time of entry through the HKDSE examination registration system. The certificate submitted should be verified by his/her school and the stamp of the school seal should be shown on the copy.</p>	<p>Candidate is allowed to submit the updated evidence of qualification on or before 15 Jan 2015.</p>	

# 2015 MUSIC EXAMINATIONS

## ○ Paper 1 (Listening)

- Number of questions will not always be fixed at four in 1A and seven in 1B.
- Objective: Demonstrate listening skills to identify and respond critically to diverse genres & styles
- Answers by memorization in 1A essay were observed and this should not be encouraged.
- Update in the Study Guidelines in C&A Guide  
<http://334.edb.hkedcity.net/EN/curriculum.php>
  - E.g. Module 1 (Listening) - narrowing the scope of operas to Italian and German operas in the Classical and Romantic Periods, and symphonies to Classical & Romantic Periods, and 20th Century.



# 2015 MUSIC EXAMINATIONS

## ○ Paper 3 (Creating I)

- Each recording on the CD should be named according to the pieces in the folio instead of “Track 1”, “Track 2”, etc.
- All recordings should be stored in one disc only
- Recording level should be loud enough and should not contain unacceptable noise
- CDs should be put in sturdy hard cases



# 2015 MUSIC EXAMINATIONS (CONT.)

## Paper 3 (Creating I)

- Recordings should be **double-checked** to avoid any distortion in sound or technical problem
- **Not to include a set of softcopy of the scores** on the CD
- To print all scores and the reflective reports **in ONE double-size bound booklet/folder.**
- If live recordings is chosen, attention should be paid to the **quality of the performance.**  
Inaccurate rhythm , playing more slowly than indicated on the score, problem in intonation (especially strings) and other flaws never help a marker assess the portfolio.



# 2014 EXAMINATION REVIEW

16





## 2014 EXAM ENTRY

2014	Music-C		Music-E		Total
	No. entered	No. sat	No. entered	No. sat	No. sat
<b>Day Schools (SCH)</b>	26	26	162	162	188
Private	11	7	13	12	19

	2012	2013	2014
Total sat (whole group)	238	262	207



## 2014 EXAM ENTRY

Paper	No. sat (whole group)
Paper 4	3
Paper 5 (exemption)	186
Paper 5 (sit practical exam)	15
	(Total: 201)
Paper 6	3



# REVIEW ON 2014 CANDIDATES' PERFORMANCE

Paper	Speaker
Paper 1A (Music in the Western Classical Tradition)	Dr. Ada Lai
Paper 1B (Chinese Instrumental Music, Cantonese Operatic Music, Local and Western Popular Music)	Dr. Joshua Chan
Paper 3 (Creating I)	Dr. Ada Lai



# SUPPORT & RESOURCES

- <http://www.hkeaa.edu.hk>
- [HOME](#) > [HKDSE](#) > [Assessment Information](#) > [Subject Information](#) > [Category A: New Senior Secondary Subjects](#)

Category A - HKDSE Elective Subjects: Music
▶ <a href="#">Assessment Framework</a>
▶ <a href="#">Curriculum and Assessment Guide</a>
▶ <a href="#">Samples of Candidates' Performance</a>
▶ <a href="#">Practice Papers</a>
▶ <a href="#">Sample Papers</a>
▶ <a href="#">Level Descriptors</a>
▶ <a href="#">Other Resources</a>
▶ <a href="#">Frequently Asked Questions</a>
▶ <a href="#">Forms</a>



## SUPPORT & RESOURCES

- Circulars:  
<http://www.hkeaa.edu.hk/en/hkdse/admin/circulars/circulars.html>
- Exam Report and Questions Papers (publish by early November 2014)
- 2014 Samples of candidates' performance (HKEAA website) (publish by early November 2014)



## ENQUIRY

- Hotline: 3628 8860 (and press 1, 7, 1)  
3628 8070
- Email: [dse@hkeaa.edu.hk](mailto:dse@hkeaa.edu.hk)





## Q & A

