

Assessment Quality-assurance Platform (AQP)



Assessment Quality-assurance Platform (AQP) is an automated web based system developed by the HKEAA. AQP makes use of modern assessment technologies to analyse test items to ensure their quality.

What are the benefits of using AQP?

Assessment is one of the important feedback channels to students' learning. Reliability of assessment depends on the quality of individual items and overall test design. AQP analyses students' responses and calculates different statistical indicators. Teachers can make use of the indicators **to identify the specific learning needs of different students and adjust the learning and teaching accordingly, making "assessment for learning" a real practice.** The statistical indicators may also help teachers **find out problematic items or papers so that improvement in test design can be achieved in the future.** AQP is a powerful tool for schools to enhance their assessment quality.

What are the key features of the AQP?

Easy to use

AQP is a web-based system. Users can easily finish their data analysis by following some simple steps shown on screen. AQP reads and exports Excel files making data input and output convenient.

Comprehensive analysis

AQP provides different levels of data analysis. Results are displayed in tables and graphs to meet the needs of different teachers. There is an item bank function that enables teachers to prepare “tailor-made” tests or assignments that fit their students’ learning needs.

View by student

S-P chart

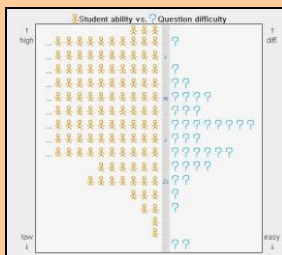
Highlight cells: Yes No

Maximize

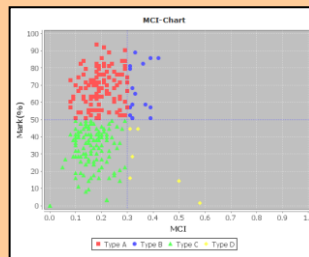
Class-No.	MCI	Mark%	Correct #	P1-1	P1-12	P2-2	P1-7	P1-8	P1-14	P1-10	P1-1	P1-12	P1-15	P1-2	P1-16	P1-6	P1-4	P2-1
1C-22	0.16	88.55%	15.25	1	1	1	1	1	1	0	1	1	1	1	1	0	0.25	1
1A-1	0.18	88.07%	15	1	1	1	1	1	1	1	0	0	0	1	1	1	1	1
1C-4	0.18	88.07%	15	1	1	1	1	1	1	1	0	0	0	1	1	1	1	1
1B-32	0.13	79.2%	14.76	1	1	1	1	1	1	1	1	0.5	0	0	0.25	1	1	1
1C-32	0.13	79.2%	14.76	1	1	1	1	1	1	1	1	1	0.5	0	0	0.25	1	1
1A-7	0.12	89.88%	14.33	1	1	1	1	1	1	1	0.25	1	1	1	0	1	0	0
1C-7	0.12	89.88%	14.33	1	1	1	1	1	1	1	0.25	1	1	1	0	1	0	0
1A-13	0.29	67.42%	12.25	1	1	1	1	0	1	0	0	1	0	1	1	1	0.25	1
1C-13	0.29	67.42%	12.25	1	1	1	1	0	1	0	0	1	0	1	1	1	0.25	1
1A-6	0.05	84.88%	12	1	1	1	1	1	1	1	1	0	1	1	0	0	1	1
1C-6	0.05	84.88%	12	1	1	1	1	1	1	1	1	0	1	1	0	0	1	1

MCI is calculated using only compulsory questions with full mark <= 4 and the statistics is displayed only when the total no. of appropriate questions available is >= 15.

Item-person map



MCI



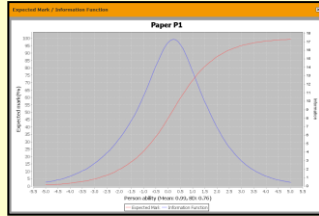
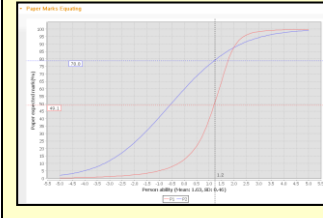
View by paper

Basic statistics and reliability indicator

Figures Table

Paper	Weight	Que.#	Full Mark	Attempt Rate	Mean	SD	Min.	25th	Median	75th	Max.	Reli.	SEM
P1	/	26	56.00	100.00%	74.88%	11.43%	54.55%	67.27%	74.55%	81.92%	98.19%	0.59	7.30%
P2	/	3	3.00	100.00%	70.71%	10.96%	66.67%	66.67%	66.67%	66.67%	100.00%	-6.43	27.80%

IRT analysis



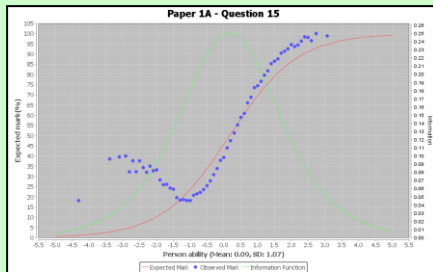
View by question

Item difficulty, discrimination, and fit statistics

Figures Table

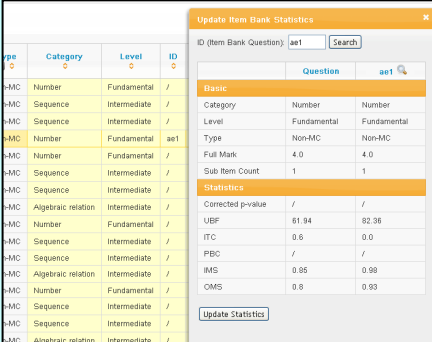
Paper	Que. No.	Type	Full Mark	Weight	Elective	Attempt Rate	Mean	SD	Diff	Alpha w/	Disc.	Fit
P1	1	Non-MC	4.00	0.20	/	100.00%	81.82%	20.82%	0.82	0.82	0.82	0.82
P1	2	Non-MC	2.00	0.30	/	100.00%	89.39%	27.67%	0.59	0.59	0.59	0.59
P1	3	Non-MC	2.00	0.40	/	100.00%	68.08%	47.65%	0.62	0.62	0.62	0.62
P1	4	Non-MC	4.00	0.40	/	100.00%	82.88%	44.34%	0.55	0.55	0.55	0.55
P1	5	Non-MC	2.00	2.00	/	100.00%	74.24%	43.19%	0.59	0.59	0.59	0.59
P1	6	Non-MC	2.00	2.00	/	100.00%	38.38%	48.47%	0.55	0.55	0.55	0.55
P1	7	Non-MC	2.00	2.00	/	100.00%	96.97%	17.27%	0.60	0.60	0.60	0.60
P1	8	Non-MC	2.00	2.00	/	100.00%	96.97%	17.27%	0.58	0.58	0.58	0.58
P1	9	Non-MC	2.00	2.00	/	100.00%	90.91%	29.97%	0.58	0.58	0.58	0.58
P1	10	Non-MC	2.00	2.00	/	100.00%	90.91%	29.97%	0.58	0.58	0.58	0.58
P1	11	Non-MC	2.00	2.00	/	100.00%	100.00%	0.00%	0.58	0.58	0.58	0.58

Item information curve



Item Bank and Automated Test Paper Assembly

Item category and item level selection



ID	Category	Level	
M-C	Number	Fundamental	/
M-C	Sequence	Intermediate	/
M-C	Sequence	Intermediate	/
M-C	Number	Fundamental	ae1
M-C	Number	Fundamental	/
M-C	Sequence	Intermediate	/
M-C	Sequence	Intermediate	/
M-C	Algebraic relation	Intermediate	/
M-C	Number	Fundamental	/
M-C	Sequence	Intermediate	/
M-C	Sequence	Intermediate	/
M-C	Algebraic relation	Intermediate	/
M-C	Number	Fundamental	/
M-C	Sequence	Intermediate	/
M-C	Sequence	Intermediate	/
M-C	Algebraic relation	Intermediate	/

Update Item Bank Statistics		
ID (Item Bank Question) ae1 <input type="text"/>		
Question		
Basic		
Category	Number	Number
Level	Fundamental	Fundamental
Type	Non-MC	Non-MC
Full Mark	4.0	4.0
Sub Item Count	1	1
Statistics		
Corrected p-value	/	/
UBF	61.94	82.36
ITC	0.6	0.0
PBC	/	/
IMS	0.95	0.99
OMS	0.8	0.93

Security

Data in AQP are encrypted to ensure security of data transmission. AQP also allows school administrators to manage access control and authorization by setting up different types of user accounts.

Technical Support

A designated hotline (3628 8503) is set up for technical supports.

Enquiry

For more information about AQP, please contact Dr. SIU Wai Lok (Manager – ATR) of the HKEAA.

Post: 7/F, Sunlight Tower, 248 Queen's Road East,
Wan Chai, Hong Kong
Phone: 3628 8577
Fax: 3628 8590
Email: aqp@hkeaa.edu.hk
Website: <https://aqp.hkeaa.edu.hk/>